








2018  
UPDATE

NEW  
PATTERNS

TREND  
PATTERNS

CASTING PAPERS **R**series  
For Synthetic Leather



<div>CASTING PAPERS</div> <div>For Synthetic Leather</div> <div>Rseries</div>	<div></div> <div>E</div>	<div></div> <div>L</div>	<div></div> <div>P</div>	<div></div> <div>V</div>	<div></div> <div>EN</div>
GRADE	EV130TPD	LXD	PXDH / PXDL	VX	ENPLUS
RELEASE TYPE	POLYOLEFIN	POLYOLEFIN	POLYOLEFIN	SPECIAL RESIN	SPECIAL RESIN
APPLICATION	PU	PU	PU, SEMI-PU, PVC	PVC	PU, SEMI-PU, PVC
MAX. TEMPERATURE	110 - 130°C	110 - 130°C	190 - 210°C	190 - 210°C	190 - 210°C
USAGE	<div><div></div><div>CAR</div></div> <div><div></div><div>FURNITURE</div></div> <div><div></div><div>GARMENT</div></div> <div><div></div><div>SPORTS</div></div> <div><div></div><div>SHOES</div></div> <div><div></div><div>BAG</div></div> <div><div></div><div>CASE</div></div>				

This data is intended only as a source of information and is given without any guarantee and does not constitute a warranty.



# NEW PATTERNS

---

CASTING PAPERS **R**<sub>series</sub>  
For Synthetic Leather

R-289



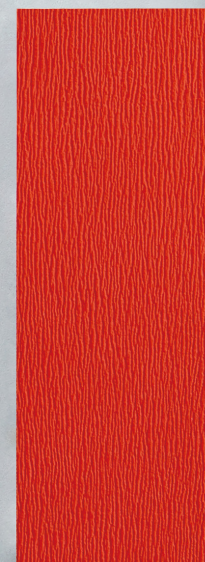
R-293



R-294



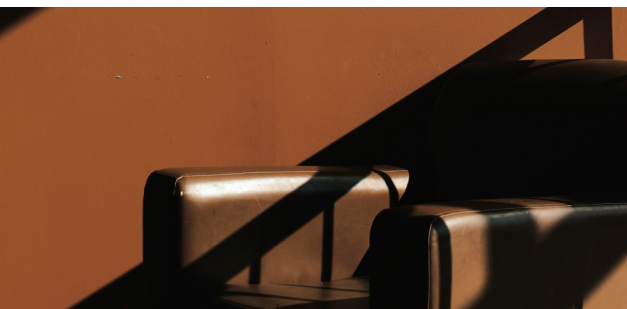
R-311





# R-289

Unique design with an irregular pattern comprised of undulating, distinct leather grain. Its rough, wild look is a main point of appeal.



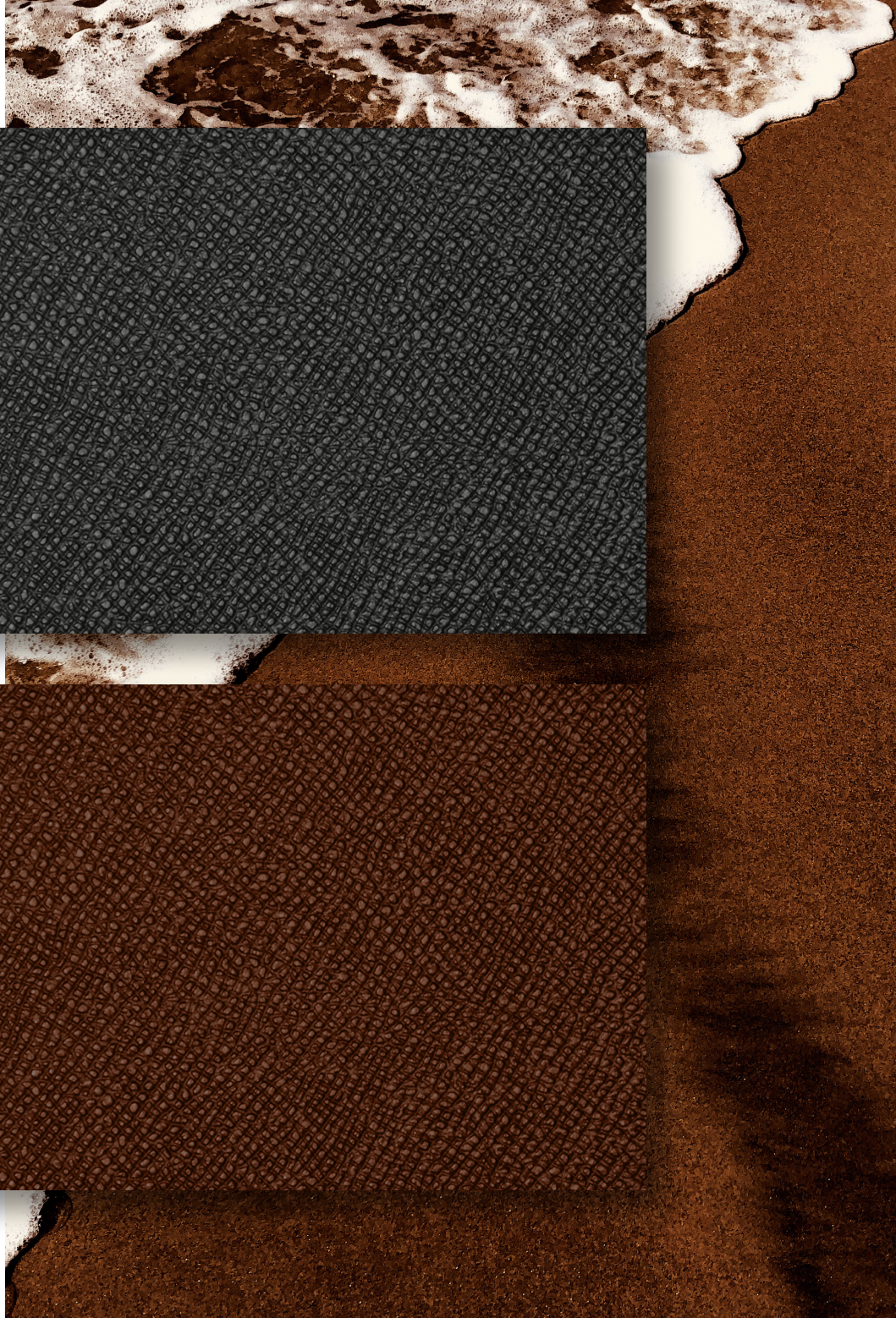




# NEW PATTERNS

NEW PATTERNS

2018 UPDATE





# R-293

Perfect expression with natural leather graining and glossiness that can respond to “genuine leather-oriented” demand. The two-tone finish with an exquisite gloss and matte feeling of grooves is also fascinating.







# NEW PATTERNS

NEW PATTERNS

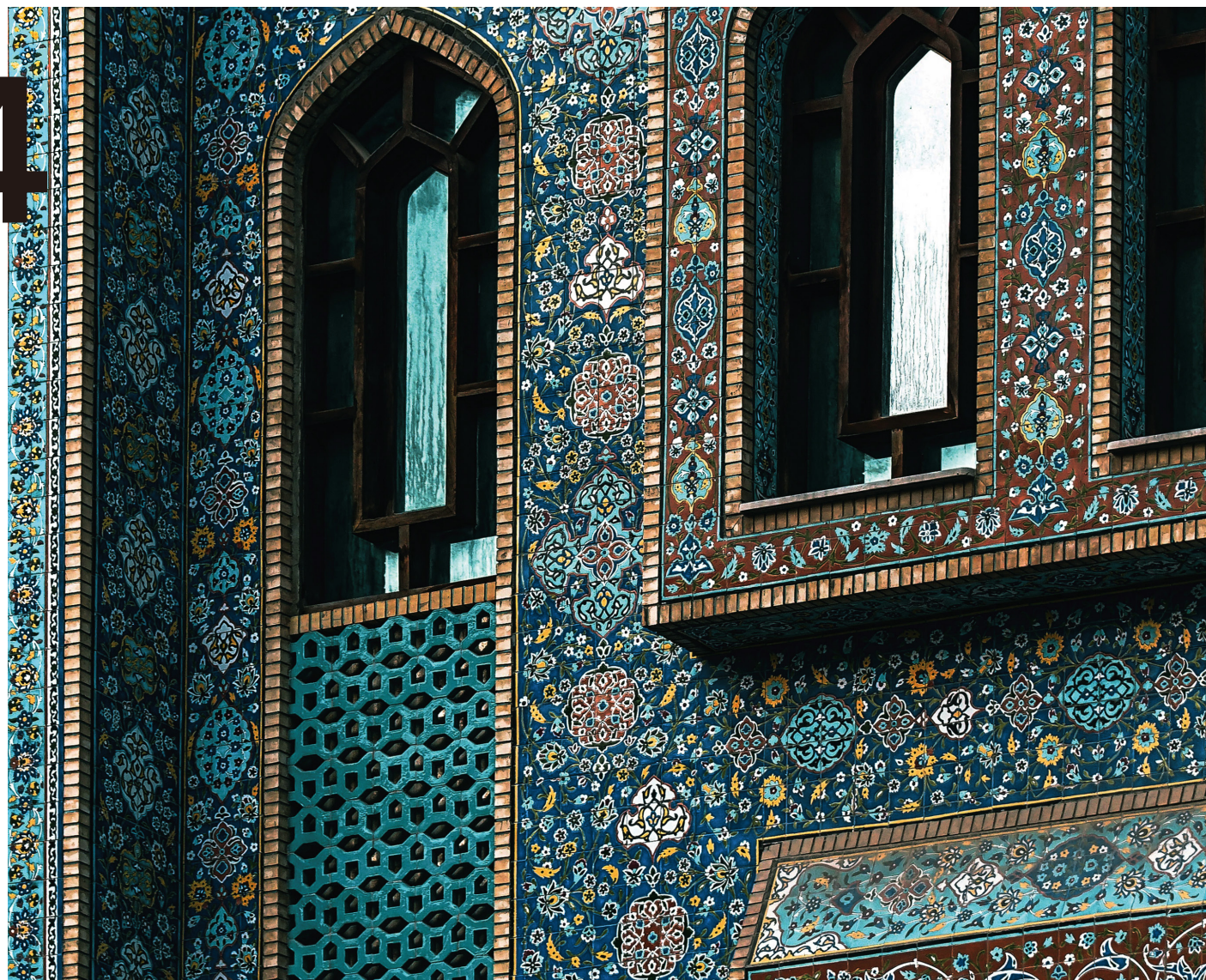
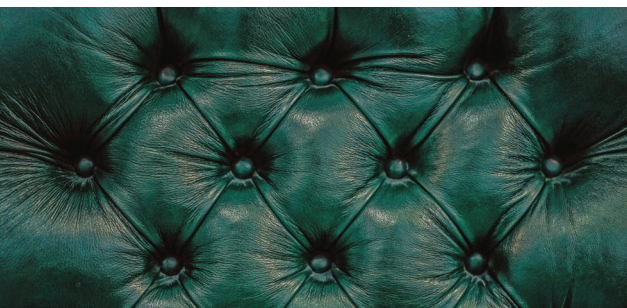
2018 UPDATE





# R-294

We expanded this popular line with attractive modifications. Broad scaling and streaky, deep grooves bring this model closer to real leather in both appearance and touch.



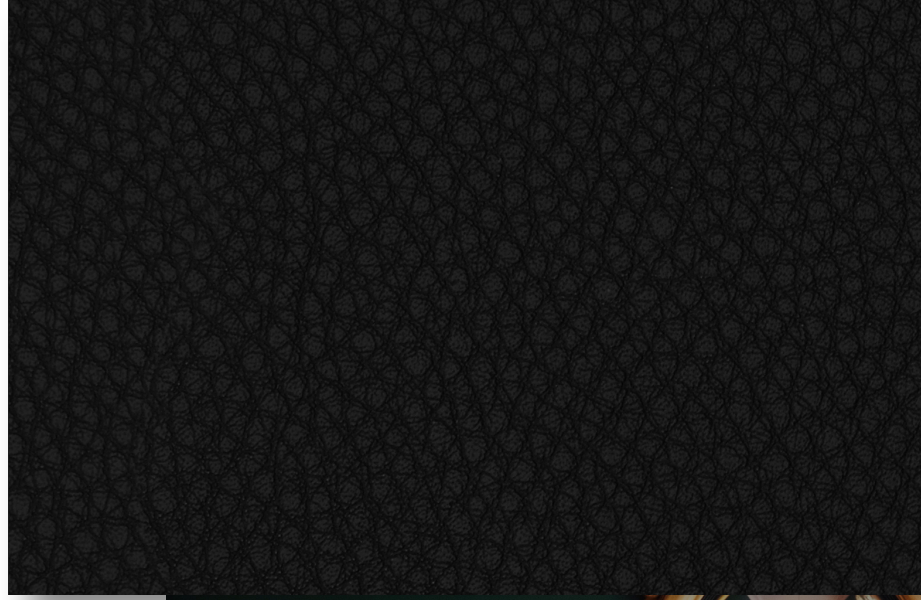
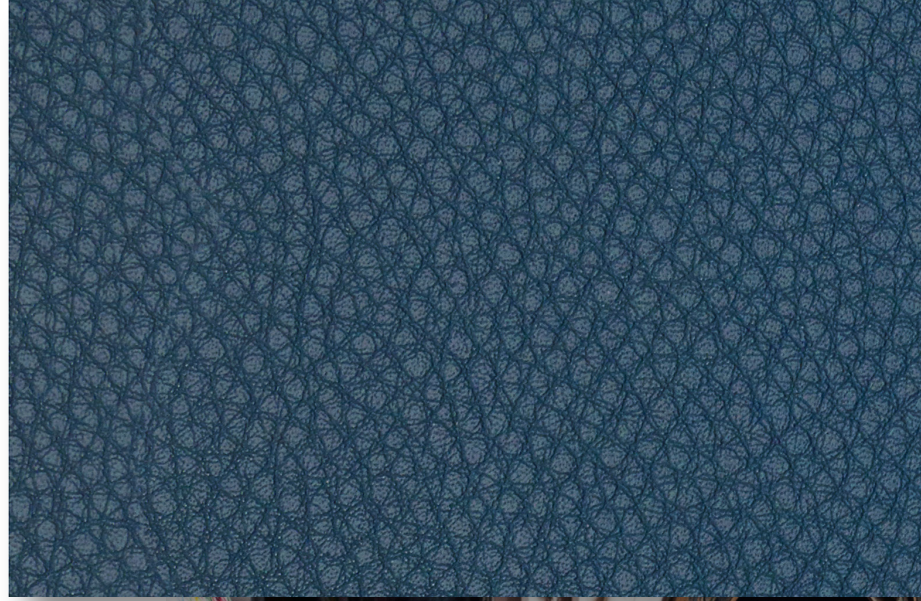




# NEW PATTERNS

NEW PATTERNS

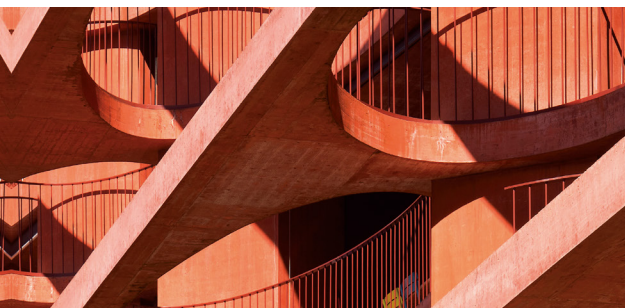
2018 UPDATE





# R-31 1

A new idea for designers seeking expression techniques. This pattern features a fine, streamlined leather grain, for a uniquely original look.







# NEW PATTERNS

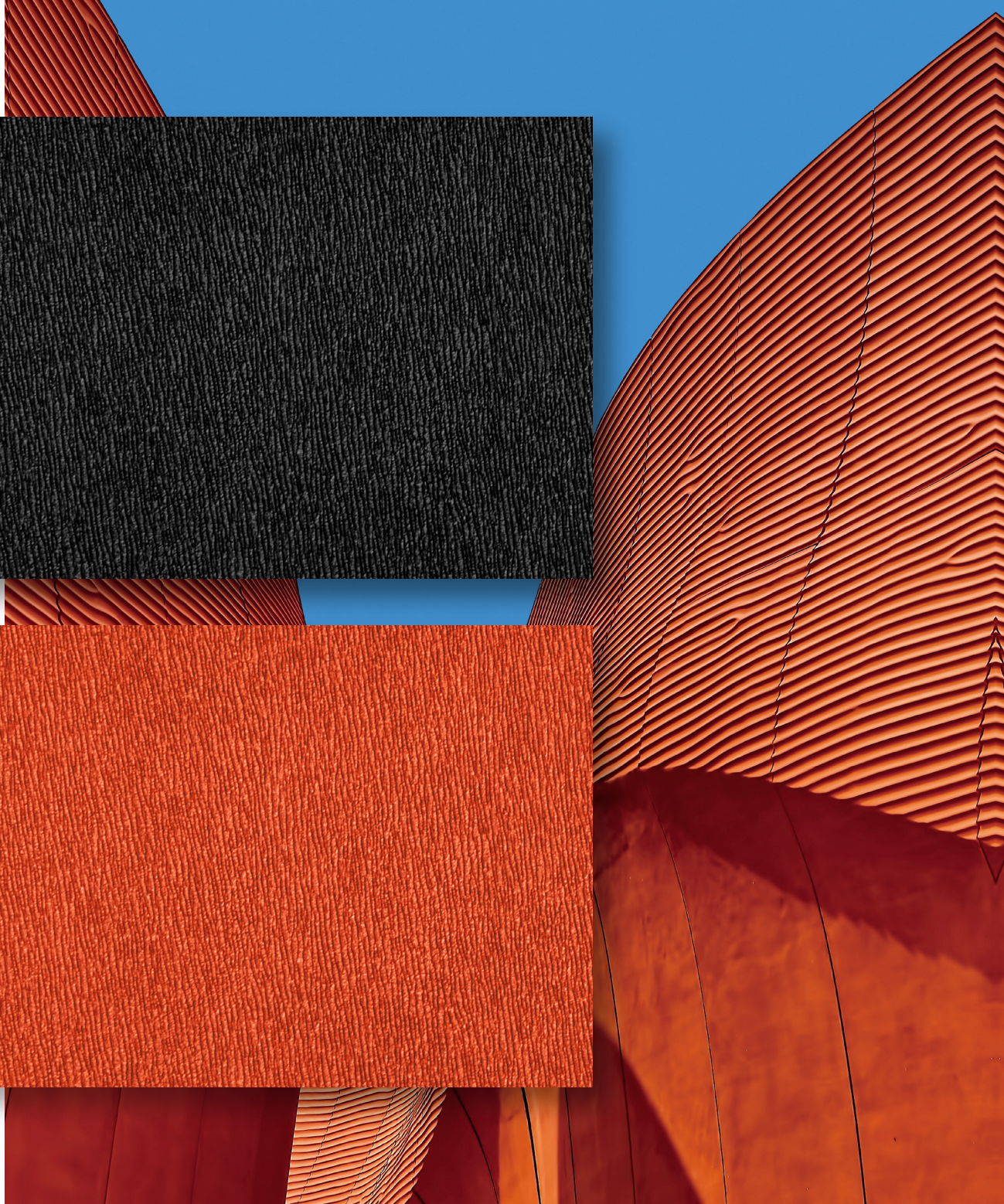
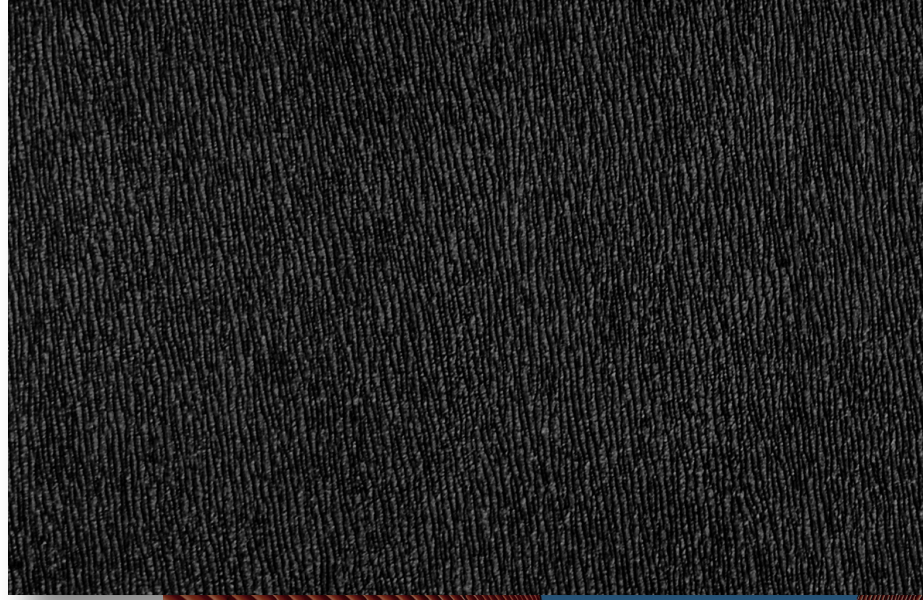
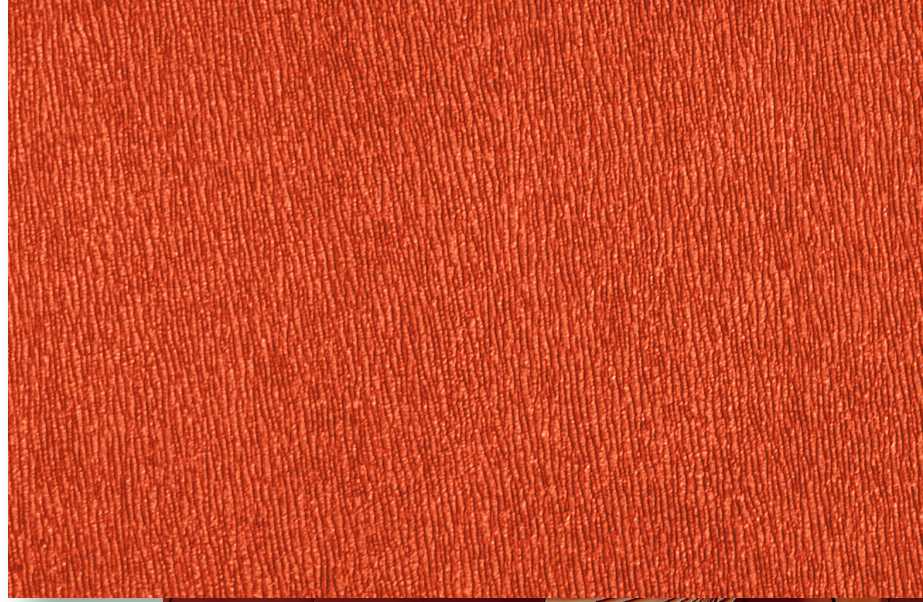
NEW PATTERNS



PATTERN DIRECTION








2018 UPDATE





---

## NEW PATTERNS LIST

	 E	 L	 P	 V	 EN
EMBOSS NO.	EV130TPD	LXD	PXDH / PXDL	VX	ENPLUS
R-289	—	O (BC5)	O (BC5)	—	—
R-293	—	O (BC5)	O (BC5)	—	—
R-294	—	O (BC5)	O (BC5)	—	—
R-311	—	O (BC5)	O (BC5)	—	—

---

### NOTES

O: Products available

— : Product not available

BC5: Curl prevention treatment



# TREND PATTERNS

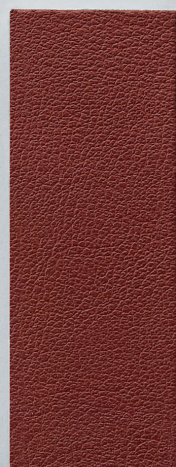
---

CASTING PAPERS **R**<sub>series</sub>  
For Synthetic Leather

R-61



R-86



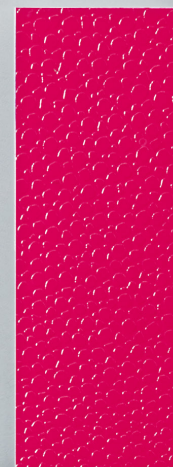
R-102



R-181



R-205



R-252





# R-61

Molded, finely smoothed surface for a subdued expression of leather. Its sophisticated and calming impression has made it a lasting favorite for long years.



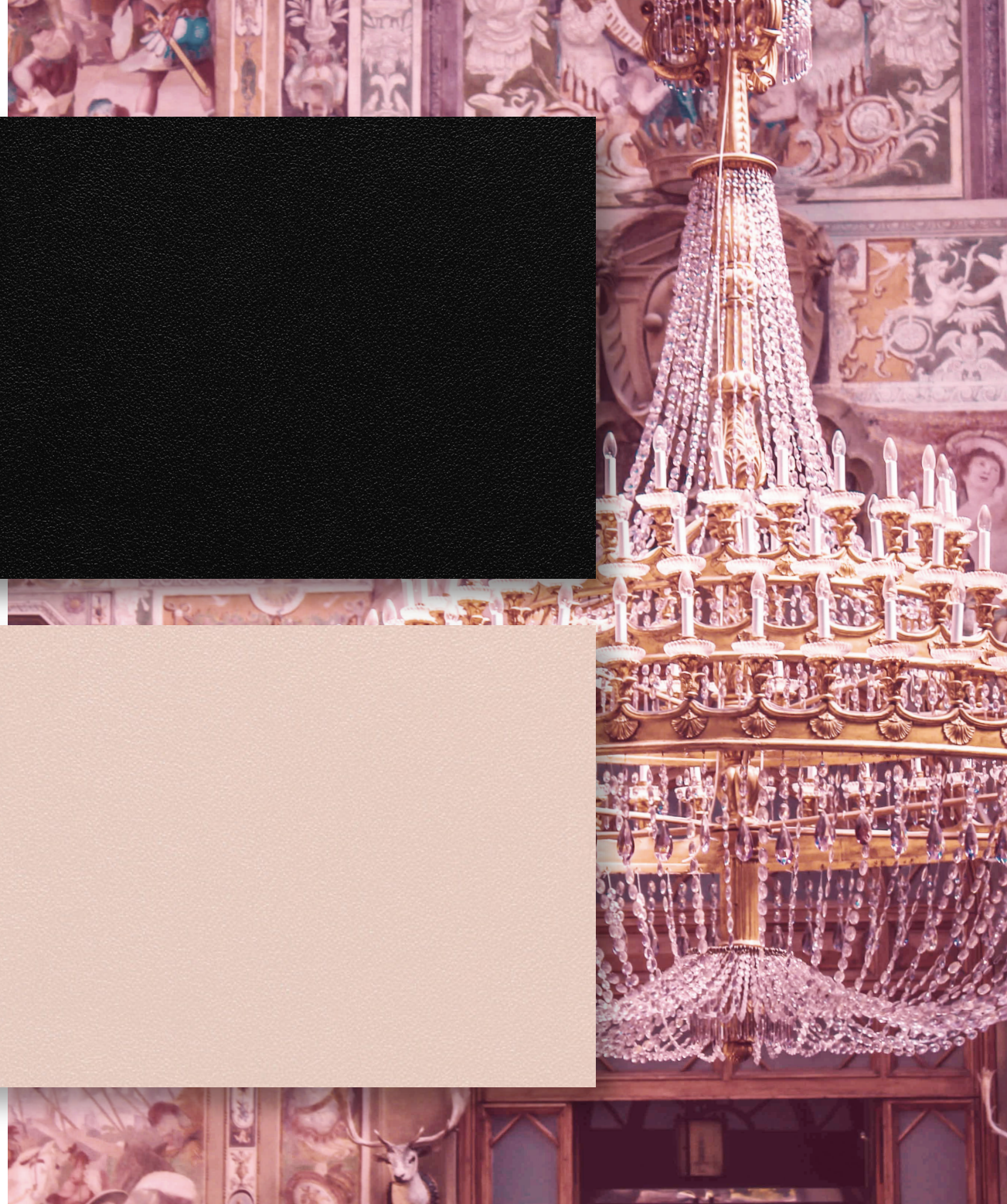
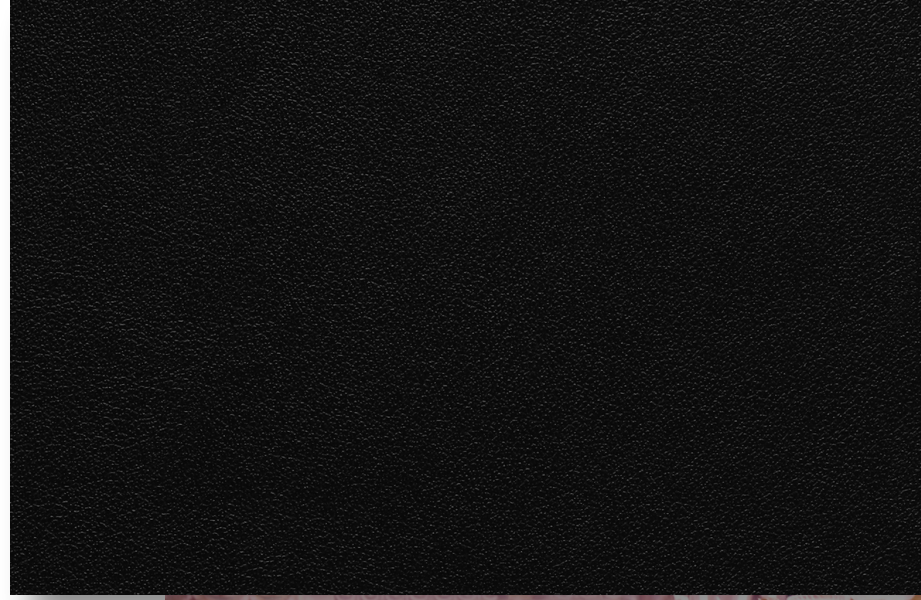
TREND PATTERNS





TREND PATTERNS

2018 UPDATE





# R-86

Our model R-86M is highly regarded for its real leather-like appearance balanced with stately leather graining. The R-86 adds a slight glossiness to further expand the range of usage.



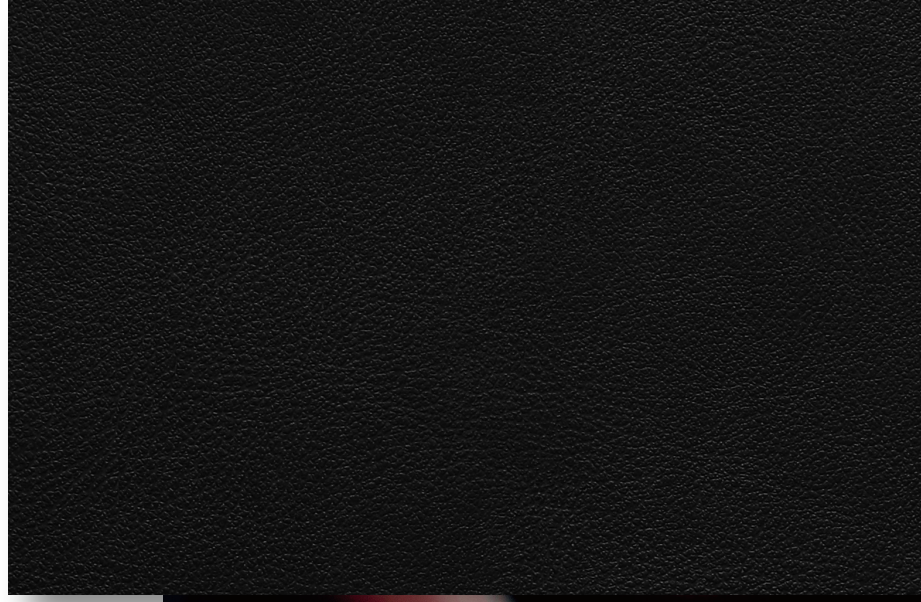
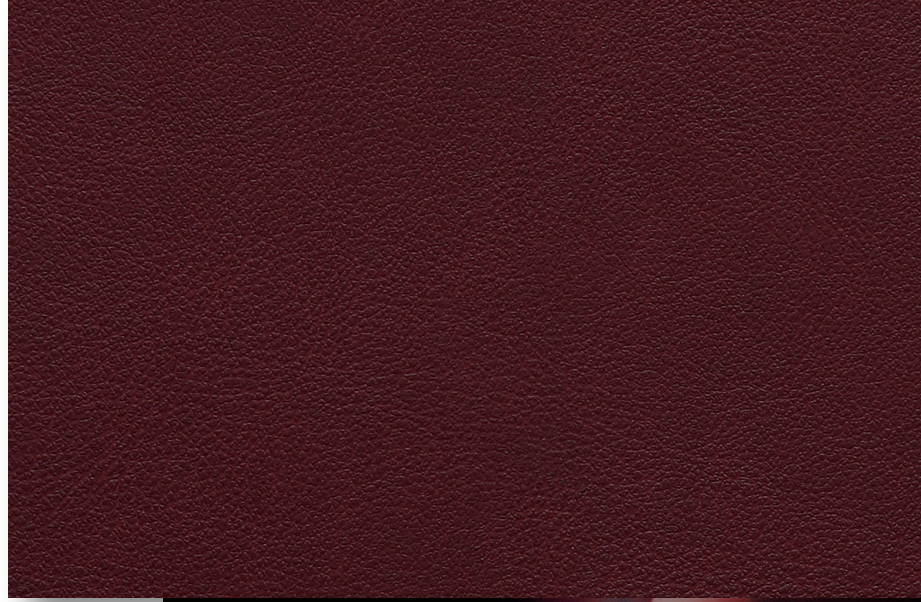
TREND PATTERNS





TREND PATTERNS

2018 UPDATE





# R-102

A pattern with a rough, irregular surface reminiscent of rocks and soil. Enjoy the design that looks remarkably like hard natural materials are used.



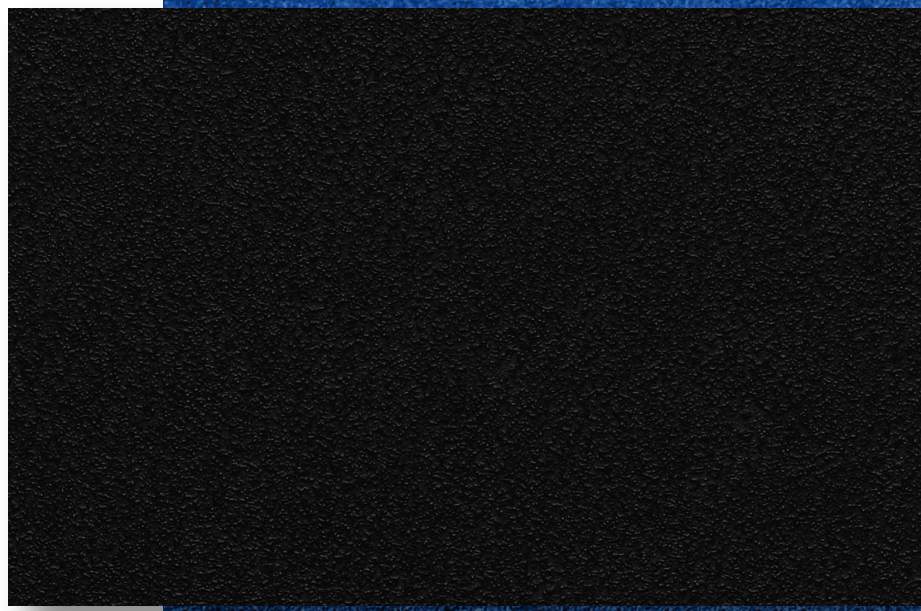
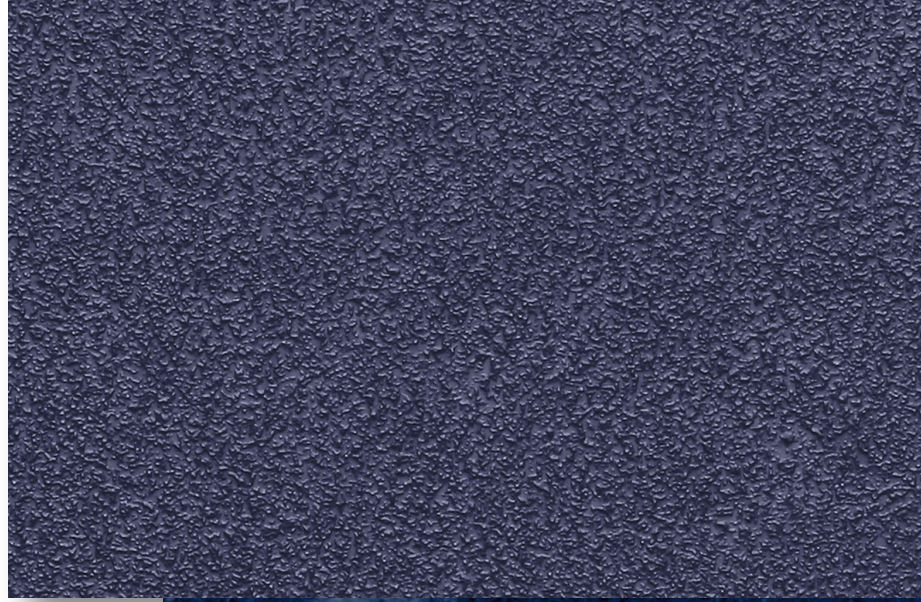
TREND PATTERNS





TREND PATTERNS

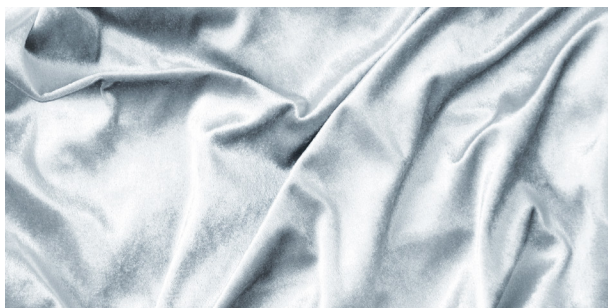
2018 UPDATE





# R-181

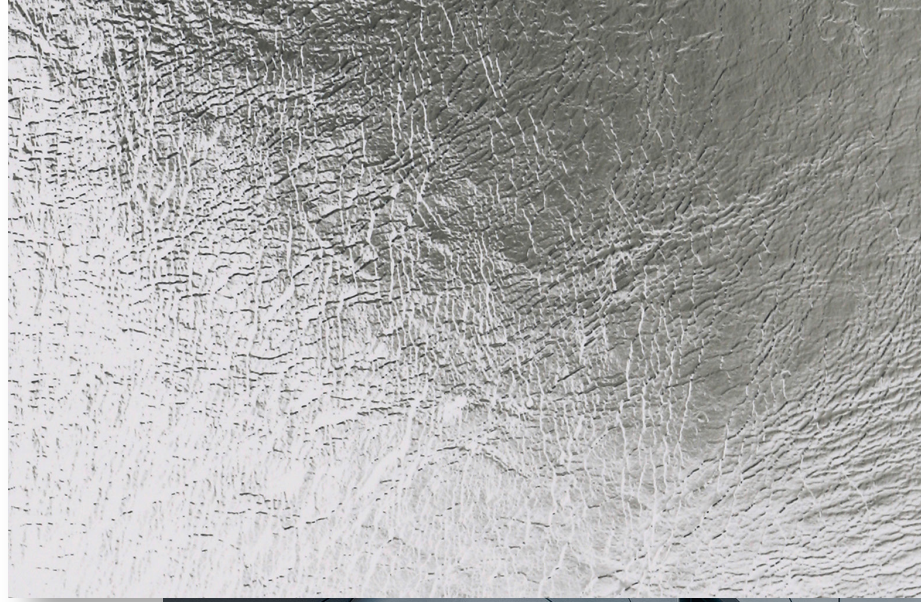
Expresses leather grain with an enamel-processed surface. The leather grain is clearly expressed, delivering a charm that is not found in ordinary enamel material.



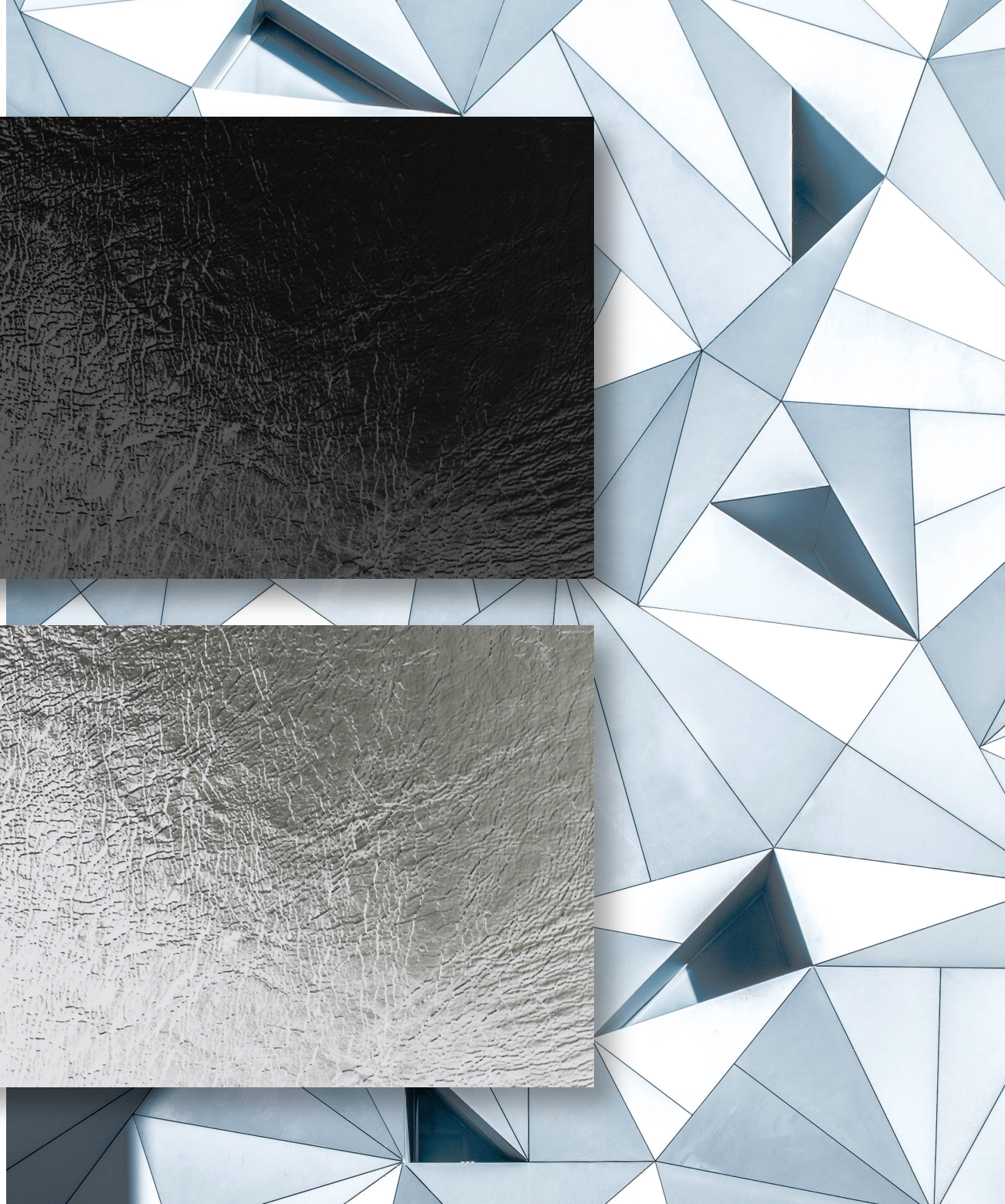
TREND PATTERNS



TREND PATTERNS



2018 UPDATE





# R-205

With a bigger scaling, rounded stingray skin pattern, this lineup comes with a unique surface featuring glossy enamel processing.



TREND PATTERNS

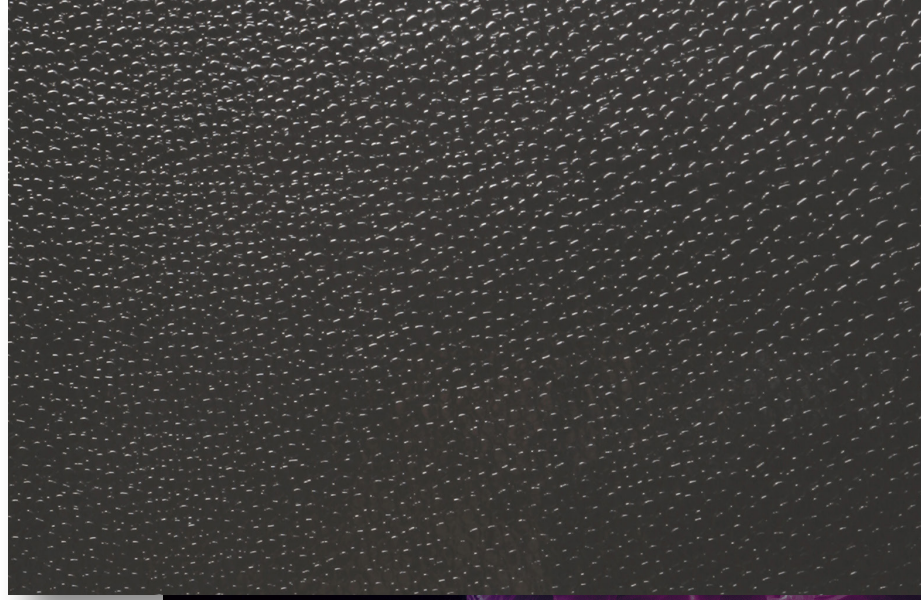
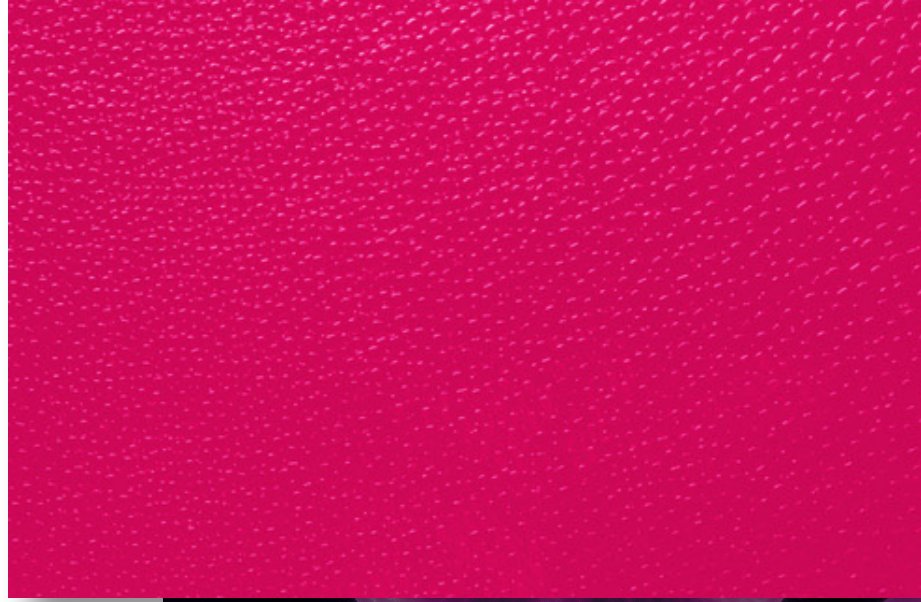


E P V EN



TREND PATTERNS

2018 UPDATE





# R-252

R-252 has superfine textures resembling fine microfiber. The pleasant touch feeling of fibers is also highlighted.



TREND PATTERNS





TREND PATTERNS

2018 UPDATE





---

## TREND PATTERNS LIST

	 E	 L	 P	 V	 EN
EMBOSS NO.	EV130TPD	LXD	PXDH / PXDL	VX	ENPLUS
R-61	O	—	O	O	—
R-86	O	—	O	O	—
R-102	O (EV160TPD BASE)	—	O	O	—
R-181	—	—	—	—	O
R-205	O	—	O	O	O
R-252	—	O	O	—	—

---

### NOTES

O: Products available

—: Product not available

BC5: Curl prevention treatment



## CASTING PAPERS **R**<sub>series</sub>

For Synthetic Leather

### FEATURES

1. Available for 3 types: That used for polyvinyl chloride (PVC) casting leather; for polyurethane (PU) synthetic leather; and for semi-PU synthetic leather (PU/PVC combination synthetic leather)
2. A wide variety of release surface available for synthetic leather casting; i.e. the silicone, polyolefin, and special resin types.
  - The Polyolefin type has superior properties, such as a wide variety of applicable PU resin solutions, fine embossing, and durability in repeated use.
  - The special resin types offer an even gloss as well as outstanding heat and scratch resistance.
3. A full range of excellent embossing patterns are at your choice.







## LINTEC Corporation

[www.castingpapers.com](http://www.castingpapers.com)

<b>Tokyo Converted Products Sales Dept.</b>	Bunkyo Garden Gate Tower 8F Koishikawa, 1-1-1 Koishikawa, Bunkyo-ku, Tokyo 112-0002, Japan	Phone: +81-3-3868-7721	Fax: +81-3-3868-7728
<b>Osaka Converted Products Sales Dept.</b>	Osaka Yotsubashi Shinmachi Bldg.5F 1-4-24 Shinmachi, Nishi-ku, Osaka-shi, Osaka 550-0013, Japan	Phone: +81-6-6539-9133	Fax: +81-6-6539-3851
<b>LINTEC (SUZHOU) TECH CORPORATION</b>	No.30 Taishan Rd., Suzhou New District, Jiangsu 215129, China	Phone: +86-512-6665-3110	Fax: +86-512-6665-3020
<b>LINTEC EUROPE B.V.</b>	Schweitzerlaan 88, 1187 JD, Amstelveen, The Netherlands	Phone: +31-20-673-3566	Fax: +31-20-673-8718
<b>LINTEC HI-TECH (TAIWAN), INC</b>	10th Fl.-5, No.318, Songjiang Rd., Zhongshan District, Taipei City 10468, Taiwan	Phone: +886-2-2571-7696	Fax: +886-2-2511-7625